

MUNDU 

Handelsagentur Wiens  
Tel: 07944 8001  
Fax : 07944 8334  
Mobil: 0171 7706115  
mail: wiens04@t-online.de

**B. Sousa Dias & Filhos, S.A.**

Rua das Escolas, 509  
4765-486 Guardizela | Portugal  
T +351 252 900 740  
geral@sousadias-sa.pt



MUNDU 

# 20 collection 24

B Sousa Dias is one of the most traditional textile companies in Portugal, counting more than 50 years of history.

Experience combined with innovation allows us to present at the same time traditional and contemporary tenders to the main markets. Always thinking of the new international fashion trends, we present our 2024 collection **MUNDU**.

Let yourself get caught up...



THROWS - 320 g/m<sup>2</sup> (with fringes)

8667PA

140x170



Col. A

100% cotton

8617PA

140x170



Col. A

100% cotton

# DECOR

THROWS - 320 g/m<sup>2</sup> (with fringes)

# DECOR

THROWS - 300 g/m<sup>2</sup> (with fringes)

8769PA 140x170



Col. A 100% cotton

8694PA 140x170



Col. A 100% cotton

8746PA 130x170



Col. A 83% cotton; 17% linen

8683PA 140x170



Col. A 100% cotton

8763PA 140x170



Col. A 100% cotton

8215PA 130x170



Col. A 100% cotton

8173PA 130x170



Col. A 83% cotton; 17% linen



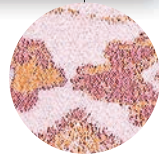
# BEACH

PAREOS - 300 g/m<sup>2</sup> - 100% cotton

8685PA 90x170



Col. A



8699PA 90x170



Col. A



8707PA 90x170



Col. A



8710PA 90x170



Col. B



8710PA 90x170



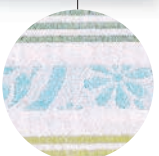
Col. A



8709PA 90x170



Col. A



7587PA 90x170



Col. A



8711PA 90x170



Col. A



8744PA 90x170



Col. A



8744PA 90x170



Col. B



# BEACH

PAREOS - 300 g/m<sup>2</sup> - 100% cotton

# BEACH

PAREOS - 300 g/m<sup>2</sup> - 100% cotton

8515PA 90x170



Col. A



8516PA 90x170



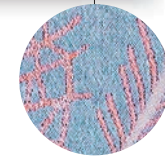
Col. A



8706PA 90x170



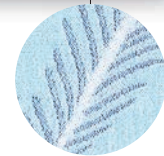
Col. B



8706PA 90x170



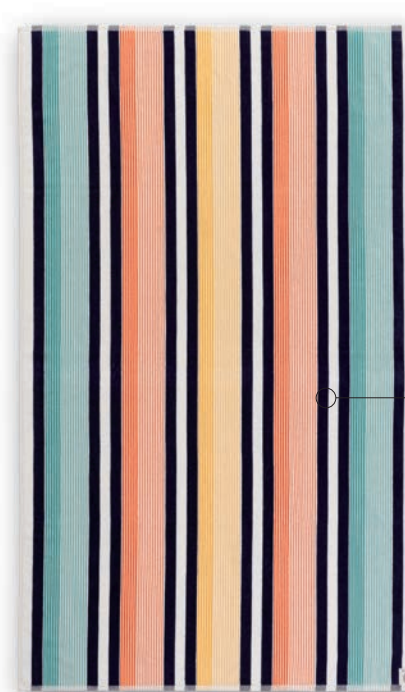
Col. A



# BEACH

BEACH TOWELS TERRY VELOURS - YARN DYED - 420 g/m<sup>2</sup> - 100% cotton

8635FE 100x170



Col. A Multicolor



7500FE 100x170



Col. A Navy Blue



7500FE 100x170



Col. D Yellow

7500FE 100x170



Col. C Orange

7500FE 100x170



Col. B Turquoise

**PT\_**

Produtos tingidos ou lavados depois da sua confeção, podem apresentar variações ligeiras de cor e tamanho, que são inerentes ao próprio processo produtivo.

Em todos os artigos que contêm linho, pode haver diferenças de tonalidade, visto se tratar da cor natural da fibra.

As cores impressas podem conter ligeiras variações quando comparadas com as dos produtos originais. A Mundu detém o direito de alterar, quer totalmente, quer parcialmente, qualquer referência, medida, peso ou especificação técnica dos produtos que compõem esta coleção.

**EN\_**

Products dyed or washed after assembly, can show minor shade and size variations, due to its specific production technique.

All articles that contain Linen, color variations might occur, as the fiber is used in its natural color.

Printed colors may represent slight variations of shade. Mundu reserves the right to discontinue or alter, either partially or totally, any reference, size, weight or technical specification of any product contained in this collection.

**FR\_**

Les produits teints ou lavés après montage, peuvent avoir des variations légères de couleur et taille, résultat du process technique utilisé.

Parmi les articles que contient du Lin, des différences de tonalité peuvent arriver, car la fibre est utilisée en couleur naturelle.

Les couleurs imprimées peuvent avoir une légère variation en comparaison aux produits originaux. Mundu se réserve le droit de modifier, total ou partiellement toute référence, taille, poids ou spécification technique des produits qui composent cette collection.

**DE\_**

Produkte die gewaschen oder gefärbt wurden nach den Nähvorgang, Können Abweichungen in Farbe und Masse haben, die direkt Resultat sind vom Produktionsprozess.

In alle Artikel mit Leinen koennen Farbunterschiede vorkommen, weil die Fasern in der Naturfarbe benutzt werden. Drucktechnisch bedingte Farbabweichungen sind leider nicht immer ganz vermeidbar. Mundu behält sich das Recht der teilweisen oder gänzlichen Artikeländerung vor.

